

Product Code: PA130100RBK

Description: Right (&amp; Left) Angled Rewirable IEC Lock+ Low Smoke Zero Halogen Appliance Outlet (Black)



### General Information

<b>Rating</b>	10A Max / 250V~ (Europe & Australia) 15A Max / 250V~ (USA) 125V~ / 250V~ (Japan)
<b>Materials</b>	Outer Body & Chassis: Nylon (PA66) LSZH (RAL 9004 Signal Black) Cable Restraint: Nylon (PA66) Housing Screws & Cable Restraint Screws: Steel, Nickel Plated Lock Pivot Lever: Polycarbonate Terminal Block & Sliding Terminal: Brass Terminal Screws: Steel, Yellow Passivated Spring: Spring Steel Locking Blade: Spring Steel Zinc Plated Red Handle: Polycarbonate LSZH (RAL 3020 Traffic Light Red)
<b>Terminal Capacity</b>	3 Core 1.5mm <sup>2</sup> Maximum, 2.5mmø Terminal Diameter
<b>Torque Value Terminal Screws</b>	0.4Nm, Strain Relief Clamping Screws; 0.3Nm
<b>Dielectric Strength</b>	1.5 kV Max
<b>Withdrawal Force</b>	> 100N
<b>Ambient Operating Temperature</b>	25°C
<b>Flammability Rating</b>	Equivalent to UL94V-0
<b>Protection Class</b>	Suitable for appliances with protection Class I according to IEC EN 61140

<b>Features</b>	Rewireable Housing can be 'flipped' to become an Up Angled Connector Fits any standard C14 outlet Anti-Vibrate Integral plug retention feature Easy pull handle Slotted and Cross head housing screws Appliance inlet suitable for cold conditions
-----------------	---

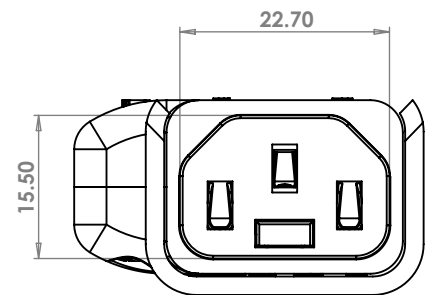
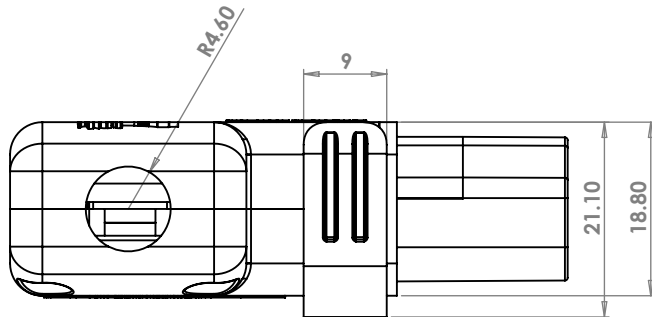
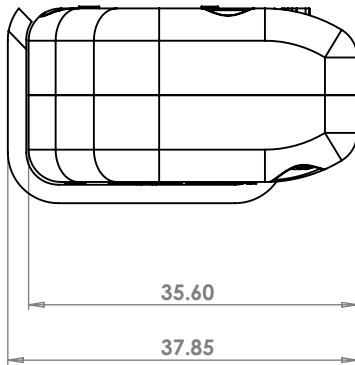
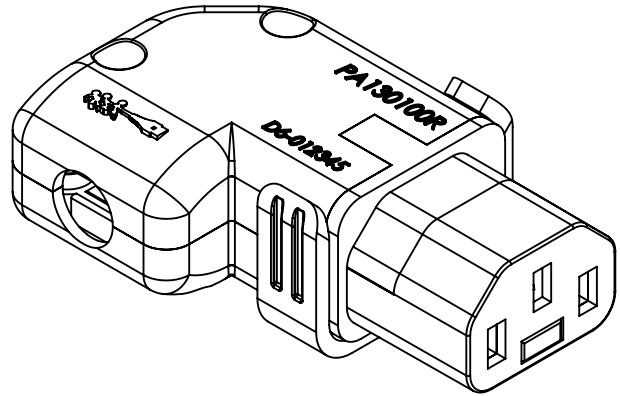
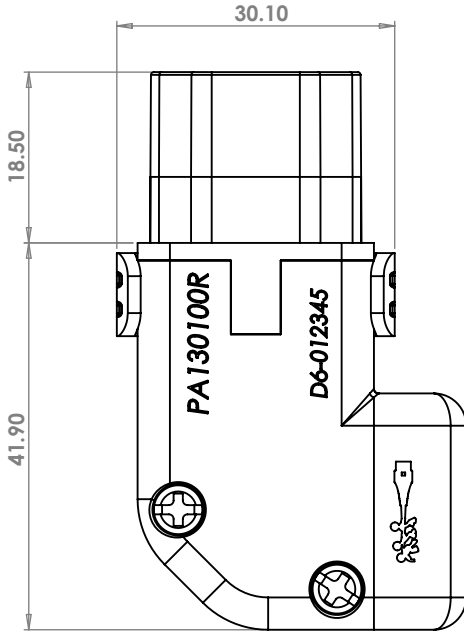
<b>Standards</b>	EN 60320-1: 2015 (KEMA-KEUR File: 35-102059) UL 60320-1 (UL File E475619) CSA C22.2 60320-1-11 (UL File E475619) AS/NZS 60320.1 (SAA File 151920) Appendix 4 Section 1, Section 6 and Appendix 10 Chapter 5 (File JET7270-43004-1001)
------------------	---



Technical Datasheet

Product Code: PA130100RBK

Description: Right (& Left) Angled Rewirable IEC Lock+ Low Smoke Zero Halogen Appliance Outlet (Black)



## Technical Datasheet

**Product Code:** PA130100DBK

**Description:** Down (& Up) Angled Rewirable IEC Lock+ Low Smoke Zero Halogen Appliance Outlet (Black)



### General Information

<b>Rating</b>	10A Max / 250V~ (Europe & Australia) 15A Max / 250V~ (USA) 125V~ / 250V~ (Japan)
<b>Materials</b>	Outer Body & Chassis: Nylon (PA66) LSZH (RAL 9004 Signal Black) Cable Restraint: Nylon (PA66) Housing Screws & Cable Restraint Screws: Steel, Nickel Plated Lock Pivot Lever: Polycarbonate Terminal Block & Sliding Terminal: Brass Terminal Screws: Steel, Yellow Passivated Spring: Spring Steel Locking Blade: Spring Steel Zinc Plated Red Handle: Polycarbonate LSZH (RAL 3020 Traffic Light Red)
<b>Terminal Capacity</b>	3 Core 1.5mm <sup>2</sup> Maximum, 2.5mmø Terminal Diameter
<b>Torque Value Terminal Screws</b>	0.4Nm, Strain Relief Clamping Screws; 0.3Nm
<b>Dielectric Strength</b>	1.5 kV Max
<b>Withdrawal Force</b>	> 100N
<b>Ambient Operating Temperature</b>	25°C
<b>Flammability Rating</b>	Equivalent to UL94V-0
<b>Protection Class</b>	Suitable for appliances with protection Class I according to IEC EN 61140

<b>Features</b>	Rewireable Housing can be 'flipped' to become an Up Angled Connector Fits any standard C14 outlet Anti-Vibrate Integral plug retention feature Easy pull handle Slotted and Cross head housing screws Appliance inlet suitable for cold conditions
-----------------	---

<b>Standards</b>	EN 60320-1: 2015 (KEMA-KEUR File: 35-102059) UL 60320-1 (UL File E475619) CSA C22.2 60320-1-11 (UL File E475619) AS/NZS 60320.1 (SAA File 151920) Appendix 4 Section 1, Section 6 and Appendix 10 Chapter 5 (File JET7270-43004-1001)
------------------	---



Technical Datasheet

Product Code: PA130100DBK

Description: Down (& Up) Angled Rewirable IEC Lock+ Low Smoke Zero Halogen Appliance Outlet (Black)

