

INTERRUTTORI IMPERMEABILI

SEALED ROCKER SWITCHES | INTERRUPTEURS ÉTANCHES



PARTNERS



INDICE Index | *Index*
INTERRUTTORI KR IP68

 IP68 KR switches | *Interrupteurs KR IP68*
INDICATORI IP68

 IP68 indicators | *Indicateurs IP68*
INTERRUTTORE CON BLOCCO MECCANICO IP68

 IP68 Locking rocker switch | *Interrupteur à bascule à verrouillage IP68*
INTERRUTTORI SPORGENTI KG IP65

 IP65 KG protruding switches | *Interrupteurs proéminents KG IP65*
ACCESSORI

 Accessories | *Accessoires*

INFORMAZIONI GENERALI General Information | *Informations Générales*
■ AFFIDABILITÀ NELLA COSTRUZIONE

Basandosi sui 47 anni di esperienza della APEM, la serie KG unisce una grande varietà di soluzioni tecniche, puntando a uno scopo ben preciso: la sicurezza del lavoro in condizioni estreme. I vantaggi che ne derivano sono molteplici:

- maggiore robustezza grazie alla cornice di protezione della bascula
- maggiore durata nel tempo grazie al pannello frontale isolante
- migliori prestazioni grazie ai contatti in argento
- maggiore affidabilità di utilizzo grazie alla serigrafia retroilluminata.

■ MODULARI ED ERGONOMICI

Il design modulare dei KG e dei KR permette di costruire molti interruttori diversi assemblando lo stesso tipo di unità di base. La vasta gamma di spie luminose e di simboli serigrafabili, dà alla APEM la possibilità di offrire prodotti adatti alle necessità specifiche dei macchinari per l'edilizia, per i lavori pubblici, per i trasporti e per l'agricoltura. Il flessibile sistema di codifica della serie KG dà la possibilità di ordinare separatamente il corpo interruttore, la bascula e le eventuali lenti. Sarà poi possibile assemblare i pezzi secondo le proprie esigenze.

■ RELIABLE CONSTRUCTION

Based on APEM's 47 years' experience, the KG series combines a large variety of technical solutions aiming at precise objective: safety of operation under extreme conditions. This results in many advantages:

- increased robustness owing to the rocker protection bezel
- increased durability owing to the front panel sealing
- increased ratings owing to the silver grain contacts
- increased actuation reliability owing to the highly visible backlit marking.

■ MODULARITY AND ERGONOMICS

The KG and KR modular design allows the construction of many different switches incorporating the same basic case type. The wide range of backlighting and marking options makes it possible to offer products adapted to the specific needs of vehicles in the building, public works, transports and agriculture fields. The KG flexible part numbering system allows to build a part number not only for a complete switch, but also for the rocker lens as separate accessories to snap-in.

■ FIABILITE DANS LA CONSTRUCTION

En se basant sur les 47 ans d'expérience d'APEM, la série KG offre un grand choix de solutions techniques avec un but bien précis: la sécurité du travail dans des conditions extrêmes. Les avantages qui en découlent sont multiples:

- robustesse plus grande grâce au cadre de protection de la bascule.
- plus de durée dans le temps grâce au panneau frontal isolant;
- meilleures prestations grâce aux contacts en argent.
- plus grande fiabilité d'utilisation grâce au marquage rétro-éclairant.

■ MODULAIRES ET ERGONOMIQUES

Le design modulaire de la série KG et KR permet de construire beaucoup d'interrupteurs différents en assemblant le même type d'unités de base. La vaste gamme de voyants et de marquage donne à APEM la possibilité d'offrir des produits adaptés aux nécessités spécifiques des machines pour la construction, pour les travaux publics, pour les transports et pour l'agriculture. Le système flexible de codification de la série KG permet de commander séparément l'interrupteur, la bascule et les lentilles éventuelles. Ensuite, on pourra les assembler selon les exigences.

VANTAGGI Advantages | *Avantages*

- **Modularità**
Modular construction | *Modularité*
- **Impermeabilità**
Sealing | *Étanchéité*
- **Personalizzabile**
Possibility of customizing | *Personnalisable*
- **Ampia gamma accessori**
Wide range of accessories | *Large choix d'accessoires*

APPLICAZIONI Applications | *Applications*

- **Automazione industriale**
Industrial automation | *Automatisation industrielle*
- **Automotive**
Automotive | *Automobile*
- **Agricoltura**
Agriculture | *Agriculture*
- **Nautico**
Nautical appliance | *Applications nautiques*
- **Movimento carichi**
Loads lifting and moving | *Mouvement de charges*
- **Macchine per edilizia**
Building machines | *Machines pour la construction*

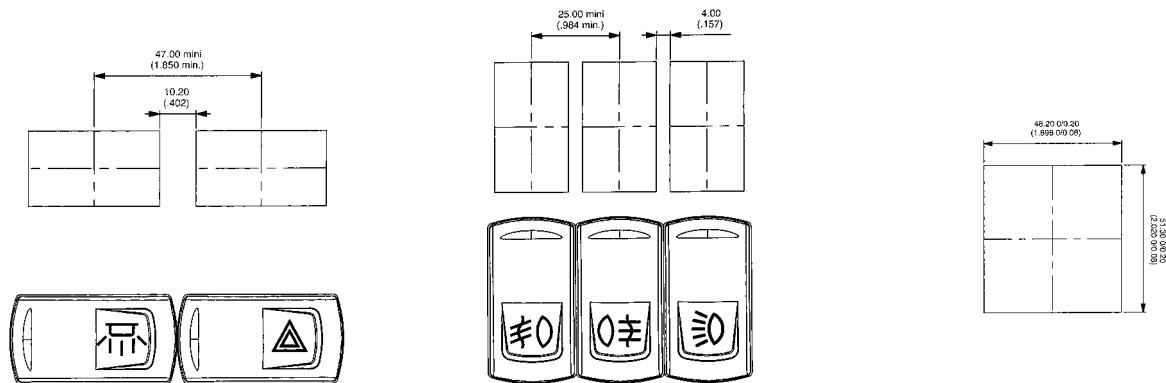
MONTAGGIO SERIE KR

KR series assembling | *Assemblage séries KR*



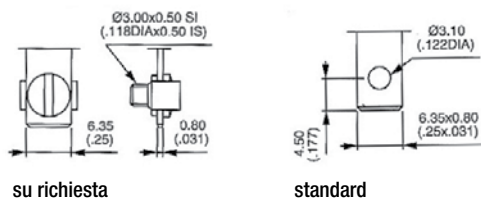
BASCULE INCISE AL LASER

Laser marking rockers | *Bascules gravées au laser*



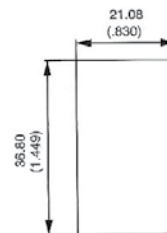
CONTATTI

Contacts | *Contacts*



DIMA FORATURA

Panel cut out | *Perçage*



OPZIONI SERIGRAFIE/INCISIONI AL LASER
Marking options/laser engravings | Options marquage/gravures au laser

Tutti i simboli rispettano la normativa ISO7000 "Simboli grafici per apparecchiature". Realizzabili simboli speciali o loghi personalizzati su disegno fornito dal cliente.

All symbols comply with the Standards ISO7000 relating to "Graphic Symbols for equipments". Special or custom symbols available upon presentation of customer's drawing.

Tous les symboles respectent la norme ISO7000 "Symboles graphiques pour appareillages". Possibilité de réaliser des symboles spéciaux ou logos personnalisés (dessin à fournir par le client).

COD.	SYMBOL	DESCRIPTION	COD.	SYMBOL	DESCRIPTION	COD.	SYMBOL	DESCRIPTION	COD.	SYMBOL	DESCRIPTION	COD.	SYMBOL	DESCRIPTION
XX	None	-	27		Rear fog lights (0634)	54		Rear window wiper (0097)	81	AUS	Aus	A9		-
01	ON	-	28		Propulsion system trim	55		Rear window washer (0099)	82		Radiator fan	AA		-
02	OFF	-	29		Beacon (1141)	56		Lower load (2223)	83		Remove retarder	AB		-
03	○	-	30		Anchor	57		Cab lock (1560)	84		Restricted speed	AC		-
04	I	-	31		Electric motor (0011)	58		Extraction	85		Preheater	AD		-
05	II	-	32		Emergency first aid vehicle (2565)	59		Pumping in	86		ABS detection	AE		-
06	STOP	-	33		Load tipping (1557)	60		Rear PTO (1572)	87		ECAS detection	AF		-
07	A	Stop	34		Loading light (2457)	61		Front PTO	88		Engine stop	AG		Battery charging condition (0247)
08	M	Motion	35		Tractor, rear-ward (1667)	62		Rockshaft down	89		Cruise res/cancel	AH		Turn signals (0084)
09		Up motion	36		Combine, direction of movement (1678)	63		Rockshaft up	90		ECAS reset	AJ		High beam (0082)
10		Down motion	37		Use no forks (2406)	64		Indicator	91		Driver windows heating	AK		Differential lock, bogie (2600)
11		Hot	38		Transmission (1166)	65		Brake release	92		Cruise set	AL		Brushing with a rotating brush (0070)
12		Cold	39		Working spot light (1145)	66		Baggage room left door	93		Air bag up/down	AM		Differential lock transfer case 4x4 (2475)
13		Hazard Warning (0085)	40		Engine (0640)	67		Baggage room right door	94		Read lighting	AN		Loader bucket, float (1441)
14		Traveller lighting	41		Horn (0244)	68		Power blinds	95		Lighting main switch	AP		Loader bucket (1437)
15		Driver lighting (1421)	42		Lock (1656)	69		Engine idle control	96		Heating using water	AQ		Rear window washer & wiper (0098)
16		Revolving light	43		Taxi sign light (2551)	70		Cruise res/set	97		Low beam	AR		Header Header drive (1579)
17		Rear ventilator	44		Working light (1204)	71		Driver windows up/down	98		Position lights	AS		Excavator/backhoe boom side shift (2091)
18		Heating (0637)	45		Working light symmetric (1204)	72		Middle door opening	99		Diesel acceleration	AT		Chemical water treatment (1851)
19		Door opening	46		-	73		Front door opening	A1		Manual mode	AU		Grapple skidder, single funct* boom (1762)
20		Windshield demister/defroster (0635)	47	ASM	-	74		Lighting in baggage room	A2		Clockwise cabin rotation	AV		-
21		Windshield wiper (0086)	48		All wheel drive	75		Cruise on/off	A3		Anticlockwise cabin rotation	AW		-
22		Windshield washer (0088)	49		Differential lock (1662)	76	TV	TV	A4		-	AY		-
23		Ventilator fan (0089)	50		-	77		Pump	A5		-	AZ		-
24		Side mirror defroster	51		-	78	WC	Toilet	A6		Parking brake	B1	HIGH	-
25		Restarting pump	52		-	79		Toilet decontamination	A7		-	B2	LOW	-
26		Front fog lights (0633)	53	N	-	80		Front windshield heating	A8		-	B3		-

INTERRUTTORI IMPERMEABILI

Sealed rocker switches | *Interrupteurs étanches*



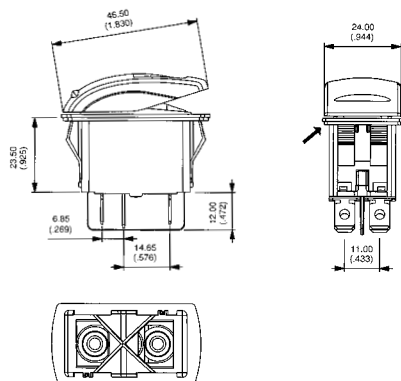
INTERRUTTORI Switches | *Interrupteurs*

Corrente 10 A	Current 10 A	Courant 10 A
Tensione 24 Vdc	Voltage 24 Vdc	Tension 24 Vdc
Contatti Argento	Contacts Silver	Contacts Argent
Manovre meccaniche 150.000	N° mechanical cycles 150.000	Manoeuvres mécaniques 150.000
Manovre elettriche 10.000	N° electrical cycles 10.000	Manoeuvres électriques 10.000
Grado di protezione IP 68	Sealing IP 68	Indice de protection IP 68
Temperatura di lavoro -40°C +85°C	Operating temperature -40°C +85°C	Température d'utilisation -40°C +85°C
Codice di omologazione APEM KR	Approval code APEM KR	Code d'homologation APEM KR



Codice Code Code	Circuito Circuit Circuit
Unipolare Single pole Unipolaire	
KR31	on - off
KR35	mom - on
KR36	on - on
KR37	mom off mom
KR38	on off mom
KR39	on off on
Bipolare Double pole Bipolaire	
KR41	on - off
KR45	mom - on
KR46	on - on
KR47	mom off mon
KR48	on off mom
KR49	on off on

Dimensioni | Dimensions | Dimensions



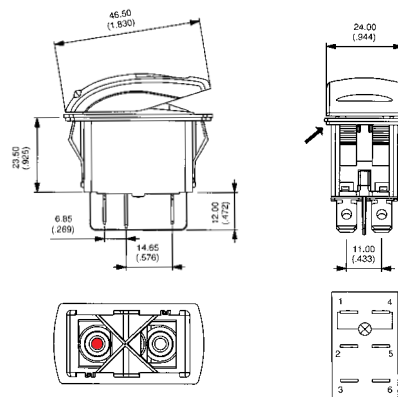
INTERRUTTORI LUMINOSI Illuminated switches | *Interrupteurs lumineux*

Corrente 10 A	Current 10 A	Courant 10 A
Tensione 24 Vdc	Voltage 24 Vdc	Tension 24 Vdc
Contatti Argento	Contacts Silver	Contacts Argent
Manovre meccaniche 150.000	N° mechanical cycles 150.000	Manoeuvres mécaniques 150.000
Manovre elettriche 10.000	N° electrical cycles 10.000	Manoeuvres électriques 10.000
Grado di protezione IP 68	Sealing IP 68	Indice de protection IP 68
Temperatura di lavoro -40°C +85°C	Operating temperature -40°C +85°C	Température d'utilisation -40°C +85°C
Codice di omologazione APEM KR	Approval code APEM KR	Code d'homologation APEM KR



Codice Code Code	Circuito Circuit Circuit	Led Led Led	Colore led Led colour Couleur led
Unipolare Single pole Unipolaire			
KR312AKJXD	on - off	24 V	■
KR312AKLXD	on - off	24 V	■
Bipolare Double pole Bipolaire			
KR412AKJXD	on - off	24 V	■
KR412AKLXD	on - off	24 V	■

Dimensioni | Dimensions | Dimensions



a richiesta fornibile con led 6 V o/e 12 V
led 6 V and 12 V are available upon request
led 6 V et/ou 12 V disponibles sur demande

INTERRUTTORI IMPERMEABILI

Sealed rocker switches | Interrupteurs étanches



INTERRUTTORI LUMINOSI DOPPI

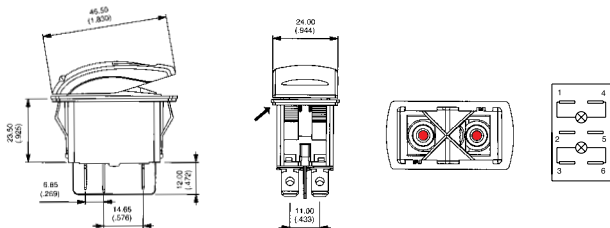
Double illuminated switches | Interrupteurs lumineux doubles

Corrente 10 A Tensione 24 Vdc Contatti Argento Manovre meccaniche 150.000 Manovre elettriche 10.000 Grado di protezione IP 68 Temperatura di lavoro -40°C +85°C Codice di omologazione APEM KR	Current 10 A Voltage 24 Vdc Contacts Silver N° mechanical cycles 150.000 N° electrical cycles 10.000 Sealing IP 68 Operating temperature -40°C +85°C Approval code APEM KR	Courant 10 A Tension 24 Vdc Contacts Argent Manoeuvres mécaniques 150.000 Manoeuvres électriques 10.000 Indice de protection IP 68 Température d'utilisation -40°C +85°C Code d'homologation APEM KR
---	---	---



Codice Code Code	Circuito Circuit Circuit	Led Led Led	Colore Color Couleur
Unipolare Single pole Unipolaire			
KR362AKJJA	on - on	24 V	■
KR362AKKKA	on - on	24 V	■
KR362AKLLA	on - on	24 V	■
KR372AKJJA	mom - off - mom	24 V	■
KR372AKKKA	mom - off - mom	24 V	■
KR372AKLLA	mom - off - mom	24 V	■
KR392AKJJA	on - off - on	24 V	■
KR392AKKKA	on - off - on	24 V	■
KR392AKLLA	on - off - on	24 V	■
Bipolare Double pole Bipolaire			
KR462AKJJA	on - on	24 V	■
KR462AKKKA	on - on	24 V	■
KR462AKLLA	on - on	24 V	■
KR472AKJJA	mom - off - mom	24 V	■
KR472AKKKA	mom - off - mom	24 V	■
KR472AKLLA	mom - off - mom	24 V	■
KR492AKJJA	on - off - on	24 V	■
KR492AKKKA	on - off - on	24 V	■
KR492AKLLA	on - off - on	24 V	■

Dimensioni | Dimensions | Dimensions



40 pz / 40 pcs / 40 pces
 pronta in stock / en stock
 a richiesta fornibile con led 6 V o/e 12 V / led 6 V and 12 V are available upon request / led 6 V et/ou 12 V disponibles sur demande



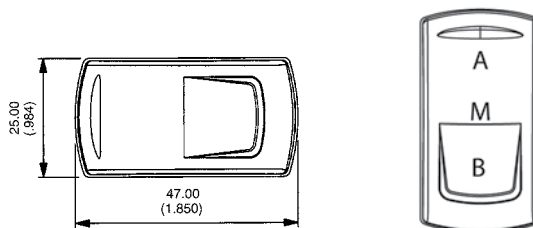
BASCULE

Plain rockers | Bascules

Materiale Termoplastico UL 94-V0 Incisione Laser	Material Thermoplastic UL 94-V0 Engraving Laser	Matériau Thermoplastique UL 94-V0 Séigraphie Laser
---	--	---

Codice Code Code	Colore Color Couleur
Non incise Not engraved Non sérigraphie	
KRR11	■
KRR11/4	■ dark blue
KRR12	■
KRR13	■
KRR14	■
KRR15	■
KRR16	■
KRR17	□ avorio
KRR19	■
KRR1A	■ alluminium bright
*Incisione singola Single engraving Un seul marquage	
KRR22NA - 00	■
KRR2ANA - 00	■ alluminium bright
*Incisione doppia Double engraving Double marquage	
KRR22NAB - 00 - 00	■
KRR2ANAB - 00 - 00	■ alluminium bright

Dimensioni | Dimensions | Dimensions



Serigrafia: nel codice sostituire 00 con simboli a pag.69
 Replace the 00 in the part number with any symbol on page 69
 Marquage: remplacer les 00 dans la référence par les symboles de la page 69

40 pz / 40 pcs / 40 pces
 pronta in stock / en stock
 * a richiesta upon request sur demande

INTERRUTTORI IMPERMEABILI

Sealed rocker switches | *Interrupteurs étanches*



INDICATORI IP68

IP68 indicators | *Indicateurs IP68*

Tension 6 VDC - 12 VDC - 24 VDC	Voltage 6 VDC - 12 VDC - 24 VDC	Tension 6 VDC - 12 VDC - 24 VDC
Corrente Led 20 mA	Led current 20 mA	Courant de la led 20 mA
Corpo ABS	Body ABS	Corps ABS
Contatti Ottone argentato	Contacts Silver plated brass	Contacts Laiton argenté
Grado di protezione IP 68	Sealing IP 68	Indice de protection IP 68
Temperatura di lavoro -40°C +85°C	Operating temperature -40°C +85°C	Température d'utilisation -40°C +85°C



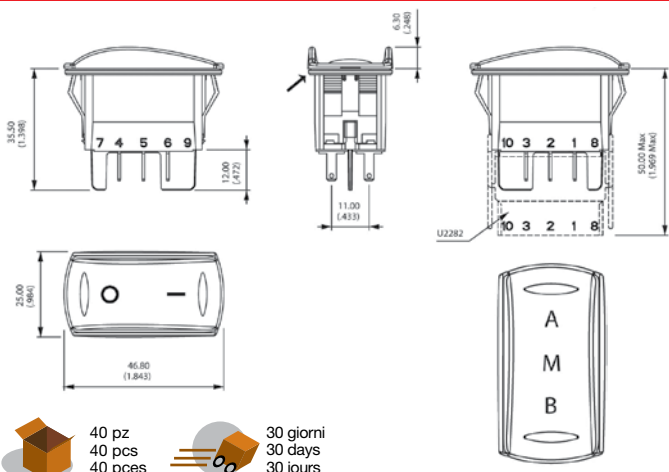
Codice Code Code	Colore Colour Couleur	Led sostituire *** con: Led replace *** with: Led remplacer *** avec:
KI 1 *** XN 000 CK	Blue	Side A: X None, Side M: A LED 6V, Side B: B LED 6V
KI 1/4 *** XN 000 CK	Dark Blue	C LED 6V
KI 2 *** XN 000 CK	Black	M LED 6V
KI 3 *** XN 000 CK	Green	R LED 6V
KI 4 *** XN 000 CK	White	D LED 12V
KI 5 *** XN 000 CK	Yellow	E LED 12V
KI 6 *** XN 000 CK	Red	F LED 12V
KI 9 *** XN 000 CK	Orange	N LED 12V
		S LED 12V
		J LED 24V
		K LED 24V
		L LED 24V
		P LED 24V
		T LED 24V

DC voltage standard



Serigrafia: nel codice sostituire 000 con simboli a pag.69
 Replace the 000 in the part number with any symbol on page 69
 Marquage: remplacer les 000 dans la référence par les symboles de la page 69

Dimensioni | Dimensions | Dimensions



40 pz 30 giorni
 40 pcs 30 days
 40 pces 30 jours



INTERRUTTORE CON BLOCCO MECCANICO IP68

IP68 Locking rocker switch | *Interrupteur à bascule à verrouillage IP68*

Corrente / Tension 10 A / 24 VDC	Current / Voltage 10 A / 24 VDC	Courant / Tension 10 A / 24 VDC
Tasto ABS	Actuator ABS	Actuateur ABS
Corpo PA 6-6	Body PA 6-6	Corps PA 6-6
Contatti Argento	Contacts Silver	Contacts Argent
Manovre meccaniche 150.000	N° mechanical cycles 150.000	Manœuvres mécaniques 150.000
Manovre elettriche 10.000	N° electrical cycles 10.000	Manœuvres électriques 10.000
Grado di protezione IP 68	Sealing IP 68	Indice de protection IP 68
Temperatura di lavoro -40°C +85°C	Operating temperature -40°C +85°C	Température d'utilisation -40°C +85°C

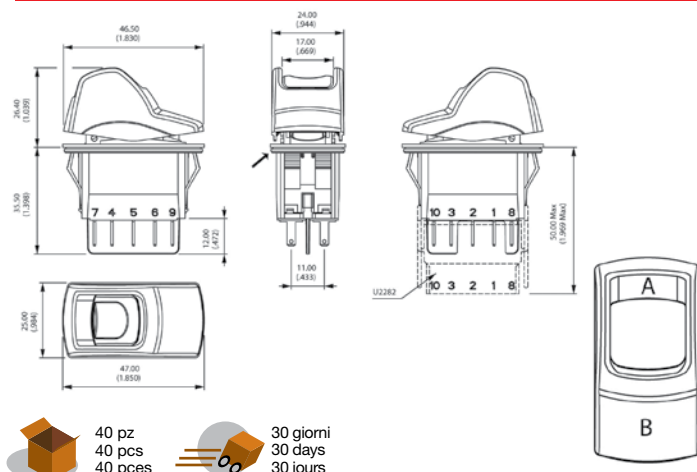


Codice Code Code	N° poli N° poles	Circuito Circuit Circuit	Colore Colour Couleur	Colore attuatore Actuator colour Couleur Actuateur
KL 312AKXA125N 00	1	ON - OFF	Black	Yellow
KL 412AKXA125N 00	2	ON - OFF	Black	Yellow



Serigrafia: nel codice sostituire 000 con simboli a pag.69
 Replace the 000 in the part number with any symbol on page 69
 Marquage: remplacer les 000 dans la référence par les symboles de la page 69

Dimensioni | Dimensions | Dimensions



40 pz 30 giorni
 40 pcs 30 days
 40 pces 30 jours

INTERRUTTORI IMPERMEABILI

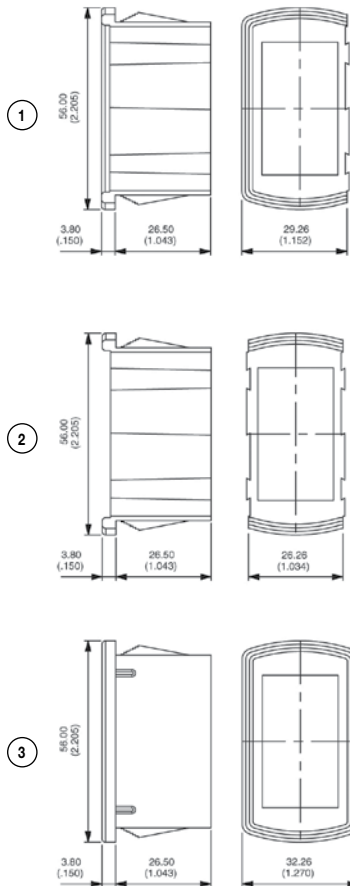
Sealed rocker switches | Interrupteurs étanches



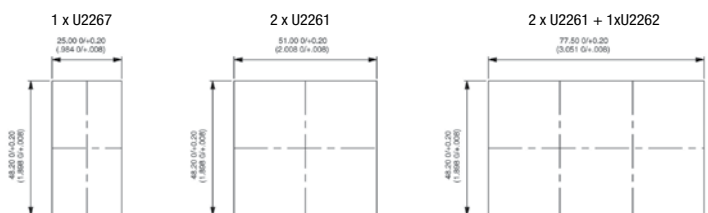
ACCESSORI SERIE K

K series accessories | Accessoires série K

Codice Code Code	Descrizione Description Description	Foto Photo Photo
Supporti Mounting Panel Support		
U2261	Finale End Final	1
U2262	Centrale Middle Central	2
U2267	Singolo Single Unique	3
Accessorio rimozione Removing tool Accessoires pour le déplacement		
U3052		4

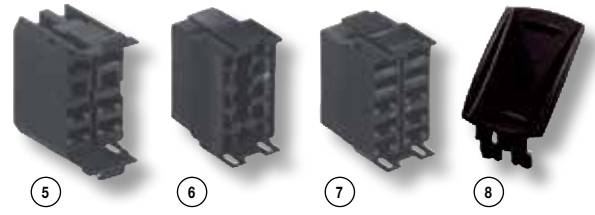


Foratura pannello | Panel cut-out | Perçage du panneau



40 pz
40 pcs
40 pces

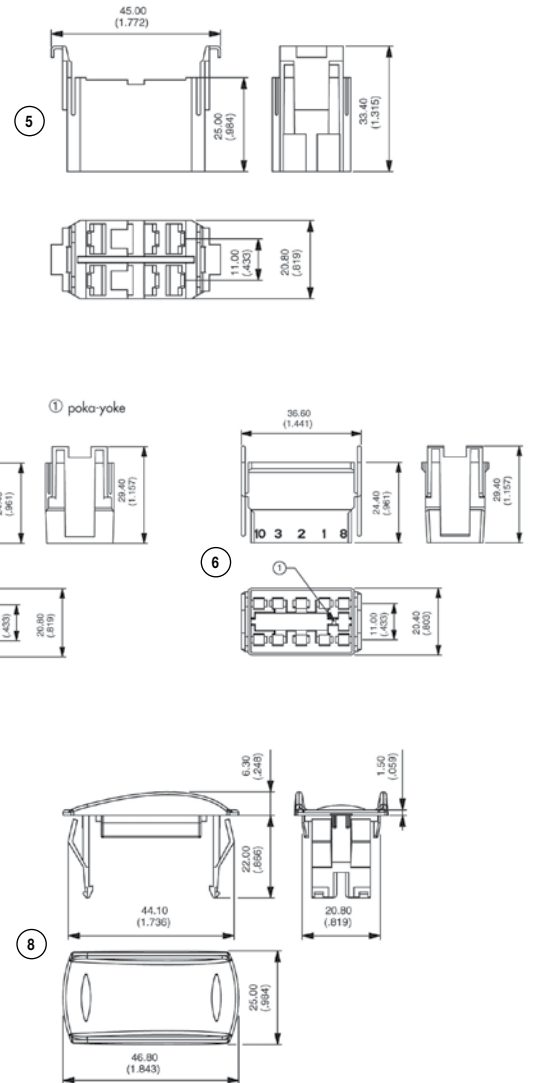
pronta
in stock
en stock



ACCESSORI SERIE K

K series accessories | Accessoires série K

Codice Code Code	Descrizione Description Description	Foto Photo Photo
Connettori Connectors Connecteur		
U2260	Versione 6 terminali 6 terminal version Version 6 terminaux	5
U2282	Versione 10 terminali 10 terminal version Version 10 terminaux 2,8 mm	6
U2292	Versione 10 terminali 10 terminal version Version 10 terminaux 6,3 mm	7
Copriforo Hole plugs Capuchon		
U2272		8



40 pz
40 pcs
40 pces

pronta
in stock
en stock

INTERRUTTORI IMPERMEABILI

Sealed rocker switches | Interrupteurs étanches



INTERRUTTORI NON LUMINOSI SPORGENTI

Non-illuminated switches | Interrupteurs non lumineux

Corrente 2 posizioni
15A 12VDC / 10A 24VDC

Corrente 3 posizioni
8A 12VDC / 5A 24VDC

Tensione

250 V

Contatti

Ottone argentato faston 6,3

Manovre meccaniche

100.000

Manovre elettriche

10.000

Grado di protezione

IP 65

Temperatura di lavoro

-40°C +85°C

Codice di omologazione

APEM KG

2 position current
15A 12VDC / 10A 24VDC

3 position current
8A 12VDC / 5A 24VDC

Voltage

250 V

Contacts

Faston 6,3 silver plated brass

N° mechanical cycles

100.000

N° electrical cycles

10.000

Sealing

IP 65

Operating temperature

-40°C +85°C

Approval code

APEM KG

Courant 2 positions
15A 12VDC / 10A 24VDC

Courant 3 positions
8A 12VDC / 5A 24VDC

Tension

250 V

Contacts

Laiton argenté faston 6,3

Manoeuvres mécaniques

100.000

Manoeuvres électriques

10.000

Indice de protection

IP 65

Température d'utilisation

-40°C +85°C

Code d'homologation

APEM KG



Codice

Code

Code

Circuito

Circuit

Circuit

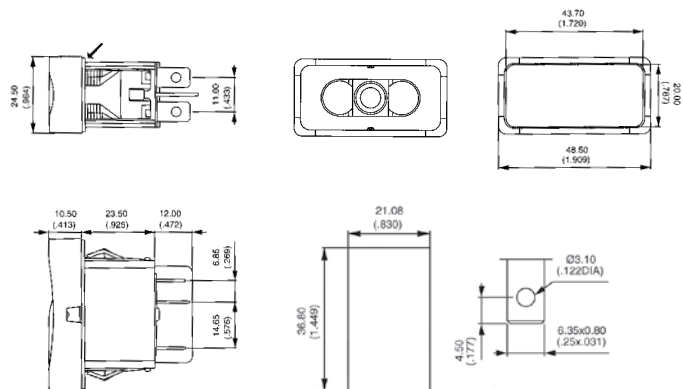
Unipolare | Single pole | Unipolaire

KG31	on	-	off
KG35	mom	-	on
KG36	on	off	on
KG37	mom	off	mom
KG38	on	off	mom
KG39	on	off	on

Bipolare | Double pole | Bipolaire

KG41	on	-	off
KG45	mom	-	on
KG46	on	-	on
KG47	mom	off	mom
KG49	on	off	on

Dimensioni | Dimensions | Dimensions



40 pz
40 pcs
40 pces



pronta
in stock
en stock



INTERRUTTORI LUMINOSI SPORGENTI

Illuminated switches | Interrupteurs lumineux

Corrente 2 posizioni
15A 12VDC / 10A 24VDC

Corrente 3 posizioni
8A 12VDC / 5A 24VDC

Tensione

250 V

Contatti

Ottone argentato faston 6,3

Manovre meccaniche

100.000

Manovre elettriche

10.000

Grado di protezione

IP 65

Temperatura di lavoro

-40°C +85°C

Codice di omologazione

APEM KG

2 position current
15A 12VDC / 10A 24VDC

3 position current
8A 12VDC / 5A 24VDC

Voltage

250 V

Contacts

Faston 6,3 silver plated brass

N° mechanical cycles

100.000

N° electrical cycles

10.000

Sealing

IP 65

Operating temperature

-40°C +85°C

Approval code

APEM KG

Courant 2 positions
15A 12VDC / 10A 24VDC

Courant 3 positions
8A 12VDC / 5A 24VDC

Tension

250 V

Contacts

Laiton argenté faston 6,3

Manoeuvres mécaniques

100.000

Manoeuvres électriques

10.000

Indice de protection

IP 65

Température d'utilisation

-40°C +85°C

Code d'homologation

APEM KG



Codice

Code

Code

Circuito

Circuit

Circuit

Lampada

Lamp

Lampe

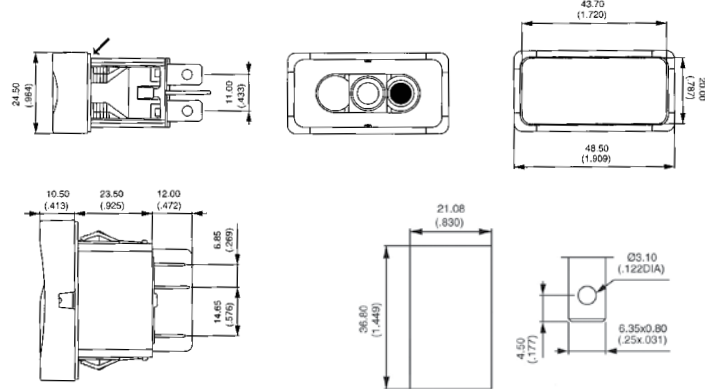
Unipolare | Single pole | Unipolaire

KG36XN	on	-	on	250 V
KG35XN	mom	-	on	250 V
KG39XN	on	off	on	250 V
KG36XR	on	-	on	24 V
KG35XR	mom	-	on	24 V
KG39XR	on	off	on	24 V

Bipolare | Double pole | Bipolaire

KG46XN	on	-	on	250 V
KG45XN	mom	-	on	250 V
KG49XN	on	off	on	250 V
KG46XR	on	-	on	24 V
KG45XR	mom	-	on	24 V
KG49XR	on	off	on	24 V

Dimensioni | Dimensions | Dimensions



40 pz
40 pcs
40 pces



pronta
in stock
en stock

INTERRUTTORI IMPERMEABILI

Sealed rocker switches | Interrupteurs étanches



INTERRUTTORI SPORGENTI LUMINOSI DOPPI

Protruding illuminated double switches | Doubles interrupteurs lumineux proéminents

Corrente 2 posizioni

15A 12VDC / 10A 24VDC

Corrente 3 posizioni

8A 12VDC / 5A 24VDC

Tensione

250 V

Contatti

Ottone argentato faston 6,3

Manovre meccaniche

100.000

Manovre elettriche

10.000

Grado di protezione

IP 65

Temperatura di lavoro

-40°C +85°C

Codice di omologazione

APEM KG

2 position current

15A 12VDC / 10A 24VDC

3 position current

8A 12VDC / 5A 24VDC

Voltage

250 V

Contacts

Faston 6,3 silver plated brass

N° mechanical cycles

100.000

N° electrical cycles

10.000

Sealing

IP 65

Operating temperature

-40°C +85°C

Approval code

APEM KG

Courant 2 positions

15A 12VDC / 10A 24VDC

Courant 3 positions

8A 12VDC / 5A 24VDC

Tension

250 V

Contacts

Laiton argenté faston 6,3

Manœuvres mécaniques

100.000

Manœuvres électriques

10.000

Indice de protection

IP 65

Température d'utilisation

-40°C +85°C

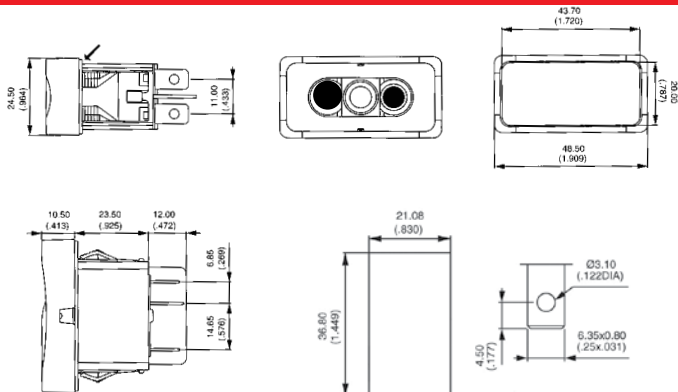
Code d'homologation

APEM KG



Code Code	Circuito Circuit	Lampada Lampe
Unipolare Single pole Unipolaire		
KG36NN	on - on	250 V
KG39NN	on off on	250 V
KG36RR	on - on	24 V
KG39RR	on off on	24 V
Bipolare Double pole Bipolaire		
KG46NN	on - on	250 V
KG49NN	on off on	250 V
KG46RR	on - on	24 V
KG49RR	on off on	24 V

Dimensioni | Dimensions | Dimensions



BASCULE E LENTI

Rockers with lenses | Bascules et lentilles

Materiale

Termoplastico UL 94-V0

Material

Thermoplastic UL 94-V0

Matériau

Thermoplastique UL 94-V0

Codice

Code
Code

Colore

Color
Couleur

KGR 11	■
KGR 21	■
KGR 31	■
KGR 41	■
KGR 51	■
KGR 61	■
KGR 71	■
KGR 91	■

Bascula aperta singola | Single open rocker | Bascule ouverte unique

KGR16	■
KGR26	■
KGR36	■
KGR46	■
KGR56	■
KGR66	■
KGR76	■
KGR96	■

Bascula aperta doppia | Double open rocker | Bascule ouverte double

KGR18	■
KGR28	■
KGR38	■
KGR48	■
KGR58	■
KGR68	■
KGR78	■
KGR98	■

Lente | Lens | Lentille

KGLB1	■
KGLB3	■
KGLB6	■
KGLB9	■
KGLBB	■
KGLBT	trasparente/transparent/transparente

Dimensioni | Dimensions | Dimensions

