

AUTOMOTIVE

AUTOMOTIVE | AUTOMOTIVE



FUSIBILI AUTOMOTIVE JCASE

pag. 66

JCASE automotive fuses | *Fusibles Automobiles JCASE*

FUSIBILI TRAZIONE ZCASE

pag. 67

Cartridge fuse ZCASE | *Fusibles à lame ZCASE – courants forts*

FUSIBILI TRAZIONE FTM1 PASSO 30MM

pag. 68

Fuse strips fixing centres 30mm | *Fusibles à lame FTM1 Pas de 30mm - courants forts*

FUSIBILI PER TRAZIONE FT3 - FT4

pag. 70

FT3-FT4 fuses for industrial trucks | *Fusibles à lame FT3 - FT4 - courants forts*

PORTAFUSIBILI PER TRAZIONE FP1011-FP1012-FP1041

pag. 71-72

FP1011-FP1012-FP1041 fuseholders for industrial trucks
Porte-fusibles pour fusibles à lame FP1011-FP1012-FP1041

PORTAFUSIBILI C.S. C1046 - C1047 - C1048

pag. 73

C1046 - C1047 - C1048 PCV fuse holder | *Porte-fusibles pour C.I. C1046 - C1047 - C1048*

PARTNERS



Expertise Applied | Answers Delivered

INDICE Index Index

FUSIBILI CONICI

Tapered fuses | *Fusibles coniques*

FUSIBILI A LAMA

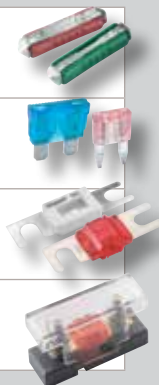
Blade fuses | *Fusibles à lame*

FUSIBILI PER TRAZIONE

Fuses for industrial trucks | *Fusibles à lame - courants forts*

PORTAFUSIBILI

Fuseholders | *Porte-fusibles*



INFORMAZIONI GENERALI General Information Informations Générales

■ FUSIBILI

Il componente chiave di un fusibile è l'elemento di fusione, un piccolo pezzo di filo metallico o una bandella di un materiale (argento o rame argentato) con un punto di fusione relativamente basso e prevedibile.

I fusibili sono dispositivi sensibili alla corrente, selezionati per essere il conduttore più debole del circuito. La protezione del circuito avviene quando il fusibile fonde e interrompe in sicurezza il flusso di corrente.

Il criterio chiave per giudicare la prestazione di un fusibile è la curva tempo-corrente. La curva viene utilizzata per dimensionare il fusibile in relazione al sovraccarico di corrente previsto nell'applicazione.

■ FUSES

The key component of a fuse is the "element", a short piece of metallic wire or strap made of a material with a relatively low and predictable melting point.

Fuses are current sensitive devices and selected to be the weakest link in the circuit.

Circuit protection is provided when the fuse link melts and safely interrupt the overcurrent demand.

The key criteria to judge the performance of a fuse is the time versus current characteristic curve.

The curve can be used to match the fuse with the anticipated overcurrent load expected in the application.

■ FUSIBLES

Le composant clé d'un fusible est l'élément de fusion, un petit bout de fil métallique ou une bande d'un matériau (argent ou cuivre argenté) ayant un point de fusion relativement bas et compatible avec l'application. Les fusibles sont sensibles au courant et sont choisis afin d'être le conducteur le plus faible du circuit.

La protection du circuit a lieu lorsque le fusible fond et interrompt en toute sécurité le passage du courant.

Le critère clé pour juger de la bonne performance d'un fusible est la courbe temps-courant. La courbe est utilisée pour dimensionner le fusible par rapport à la surcharge de courant prévue dans l'application.

VANTAGGI Advantages Avantages

■ Vasta gamma

Wide range
Vaste gamme

■ Pronta consegna

Prompt delivery
Livraison rapide

■ Facile reperibilità

Easy availability
Faciles à trouver

■ Basso costo

Low cost
Prix bas

APPLICAZIONI Applications Applications

■ Automobili

Cars | *Automobiles*

■ Accessori per automobili

Car accessories | *Accessoires pour véhicules*

■ Antifurti per auto

Car alarms | *Antivolos pour véhicules*

■ Frigoriferi per auto

Car refrigerators | *Refrigeration pour véhicules*

■ Muletti

Lifts | *Chariots élévateurs*

■ Montacarichi

Elevators | *Monte-charges*

■ Protezione batterie

Battery protection | *Protection des batteries*

AUTOMOTIVE

Automotive | Automobile



FUSIBILI RL MINI LAMA

RL mini blade fuses | *Mini-fusibles à lame RL*

Caratteristica

F= rapido
Tensione
 32 Vdc
Capacità di rottura
 1000 A
Contatto
 Ottone stagnato 2,8 mm
Corpo
 Plastica colorata
Norme riferimento
 SAE J2077
 ISO 8820
Cod. omologazione
 Littelfuse Mini

Characteristic

F= fast
Voltage
 32 Vdc
Breaking capacity
 1000 A
Contacts
 Tinned brass
Body
 Coloured plastic
Standards
 SAE J2077
 ISO 8820
Approval code
 Littelfuse Mini

Caractéristique

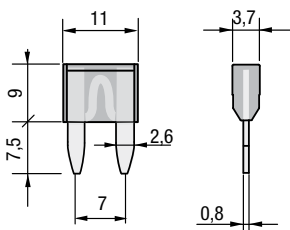
F= rapide
Tension
 32 Vdc
Pouvoir de coupure
 1000 A
Contact
 Laiton étamé 2,8 mm
Corps
 Plastique coloré
Normes
 SAE J2077
 ISO 8820
Code d'homologation
 Littelfuse Mini



TEMPI DI FUSIONE | Time current | Temps de fusion

Corrente nominale In Rated current <i>Courant nominal</i>	Corrente di prova Test current <i>Courant d'essai</i>			
	1,1xIn	1,35xIn	2xIn	6xIn
2 A - 35 A	360.000 s	0,75 s - 600 s	0,15 s - 5 s	0,030 s - 0,100 s

Corrente nominale Rated current <i>Courant nominal</i>	Codice Code <i>Code</i>	Colore Colour <i>Couleur</i>
2 A	RL32.02	□
3 A	RL32.03	■
4 A	RL32.04	■
5 A	RL32.05	■
7,5 A	RL32.07	■
10 A	RL32.10	■
15 A	RL32.15	■
20 A	RL32.20	■
25 A	RL32.25	□
30 A	RL32.30	■
35 A	RL32.35	■



100 pz
100 pcs
100 pces



pronta
in stock
en stock



a richiesta 125 V
they are available 125 V
sur demande 125 V



FUSIBILI AL LAMA

AL blade fuses | *Fusibles à lame AL*

Caratteristica

F= rapido
Tensione
 32 Vdc
Capacità di rottura
 1000 A
Contatto
 Ottone stagnato 6,3 mm
Corpo
 Plastica colorata
Norme riferimento
 SAE - J 1284
 ISO 8820-3
Cod. omologazione
 Littelfuse ATOF

Characteristic

F= fast
Voltage
 32 Vdc
Breaking capacity
 1000 A
Contacts
 Tinned brass
Body
 Coloured plastic
Standards
 SAE - J 1284
 ISO 8820-3
Approval code
 Littelfuse ATOF

Caractéristique

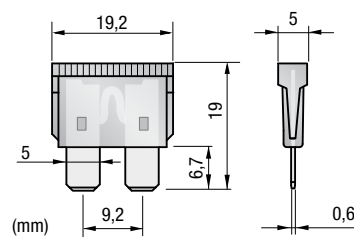
F= rapide
Tension
 32 Vdc
Pouvoir de coupure
 1000 A
Contact
 Laiton étamé 6,3 mm
Corps
 Plastique coloré
Normes
 SAE - J 1284
 ISO 8820-3
Code d'homologation
 Littelfuse ATOF



TEMPI DI FUSIONE | Time current | Temps de fusion

Corrente nominale In Rated current <i>Courant nominal</i>	Corrente di prova Test current <i>Courant d'essai</i>			
	1,1xIn	1,35xIn	2xIn	6xIn
1 A - 40 A	> 100 h 360.000 s	750 ms - 1800 s 0,750 s - 600 s	100 ms - 5 s 0,150 s - 5 s	20 ms - 500 ms 80 ms - 500 ms

Corrente nominale Rated current <i>Courant nominal</i>	Codice Code <i>Code</i>	Colore Colour <i>Couleur</i>
1 A	AL32.01	■
2 A	AL32.02	■
3 A	AL32.03	■
4 A	AL32.04	■
5 A	AL32.05	■
7,5 A	AL32.07	■
10 A	AL32.10	■
15 A	AL32.15	■
20 A	AL32.20	■
25 A	AL32.25	□
30 A	AL32.30	■
35 A	AL32.35	■
40 A	AL32.40	■



100 pz
100 pcs
100 pces



pronta
in stock
en stock



a richiesta 58V, 80V, 90V
they are available 58V, 80V, 90V
sur demande 58V, 80V, 90V

AUTOMOTIVE

Automotive | Automobile



FUSIBILI ML MAXI LAMA

ML maxi blade fuses | Maxi-fusibles à lame ML

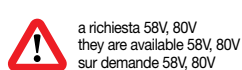
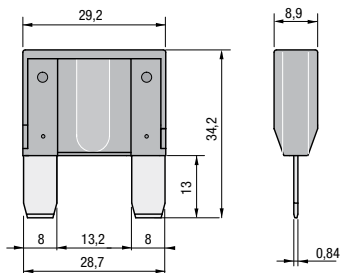
Caratteristica T= ritardati	Characteristic T= time delay	Caractéristique T= temporisés
Tensione 32 Vdc	Voltage 32 Vdc	Tension 32 Vdc
Capacità di rottura 1000 A	Breaking capacity 1000 A	Pouvoir de coupure 1000 A
Contatto A lama argento zincato	Contacts Blade, silver zinc plated	Contact A lame d'argent galvanisé
Corpo Plastica colorata	Body Coloured plastic	Corps Plastique coloré
Norme riferimento SAE - J 1888 ISO 8820-3	Standards SAE - J 1888 ISO 8820-3	Normes SAE - J 1888 ISO 8820-3
Cod. omologazione Littelfuse MAXI	Approval code Littelfuse MAXI	Code d'homologation Littelfuse MAXI



TEMPI DI FUSIONE | Time current | Temps de fusion

Corrente nominale In Rated current Courant nominal	Corrente di prova Test current Courant d'essai			
	1,1xIn	1,35xIn	2xIn	6xIn
20 A - 120 A	360.000 s	60 s - 1800 s	2 s - 60 s	0,040 s - 1 s

Corrente nominale Rated current Courant nominal	Codice Code Code	Colore Colour Couleur
20 A	ML32.20	Yellow
25 A	ML32.25	Grey
30 A	ML32.30	Green
35 A	ML32.35	Brown
40 A	ML32.40	Orange
50 A	ML32.50	Red
60 A	ML32.60	Blue
70 A	ML32.70	Light Blue
80 A	ML32.80	White



FUSIBILI AC

AC fuses | Fusibles AC

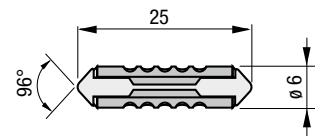
Dimensioni 6x25 mm	Dimensions 6x25 mm	Dimensions 6x25 mm
Tensione 32 Vdc	Voltage 32 Vdc	Tension 32 Vdc
Contatto Conico	Contact Tapered	Contact Conique
Corpo Plastica	Body Plastic	Corps Plastique
Norma riferimento FIAT 9.91806	Standards FIAT 9.91806	Normes FIAT 9.91806



TEMPI DI FUSIONE | Time current | Temps de fusion

Corrente nominale In Test current Courant nominal	Corrente di prova Test current Courant d'essai	
	1,5xIn	2,5xIn
5 A - 40 A	> 1 h min	60 s max

Corrente nominale Rated current Courant nominal	Codice Code Code	Colore Colour Couleur
5 A	AC05	Yellow
8 A	AC08	Grey
10 A	AC10	White
16 A	AC16	Green
25 A	AC25	Brown
40 A	AC40	Red



AUTOMOTIVE

Automotive | Automobile



SERIE JCASE JCASE Series | Séries JCASE

Caratteristica

T= ritardato

Tensione

32 Vdc

Capacità di rottura

1000 A

Characteristic

T= time delay

Voltage

32 Vdc

Breaking capacity

1000 A

Caractéristique

T=temporisé

Tension

32 Vdc

Pouvoir de coupure

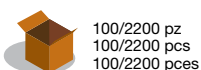
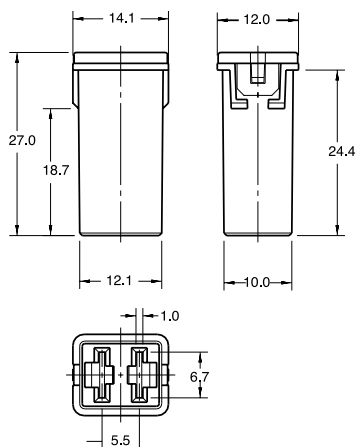
1000 A



TEMPI DI FUSIONE | Time current | Temps de fusion

Corrente nominale In Test current Courant nominal	Corrente di prova Test current Courant d'essai				
	110%In	135%In	200%In	350%In	600%In
20 A - 60 A	360,000 s	60 s - 1800 s	4 s - 60 s	0,200 s - 7 s	0,040 s - 1 s

Codice Code Code	Corrente nominale Rated current Courant nominal	I ² t I ² t I ² t	Colore Colour Couleur
FTJ0495020	20 A	1750	■
FTJ0495025	25 A	3220	□
FTJ0495030	30 A	1480	■
FTJ0495040	40 A	3650	■
FTJ0495050	50 A	8750	■
FTJ0495060	60 A	19500	■



100/2200 pz
100/2200 pcs
100/2200 pces



30 giorni
30 days
30 jours



SERIE JCASE LOW PROFILE JCASE LOW PROFILE Series | Séries JCASE LOW PROFILE

Caratteristica

T= ritardato

Tensione

58 Vdc

Capacità di rottura

1000 A

Characteristic

T= time delay

Voltage

58 Vdc

Breaking capacity

1000 A

Caractéristique

T=temporisé

Tension

58 Vdc

Pouvoir de coupure

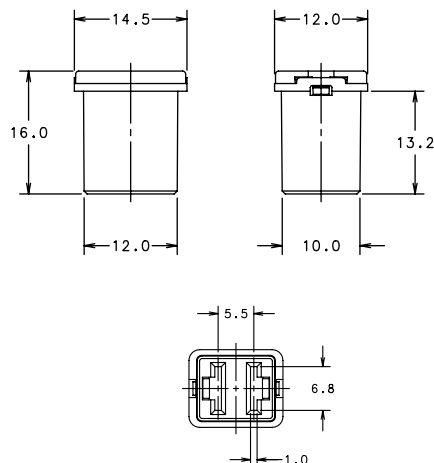
1000 A



TEMPI DI FUSIONE | Time current | Temps de fusion

Corrente nominale In Test current Courant nominal	Corrente di prova Test current Courant d'essai				
	110%In	135%In	200%In	350%In	600%In
20 A - 60 A	360,000 s	60 s - 1800 s	4 s - 60 s	0,200 s - 7 s	0,040 s - 1 s

Codice Code Code	Corrente nominale Rated current Courant nominal	I ² t I ² t I ² t	Colore Colour Couleur
FTJ0895020	20 A	400	■
FTJ0895025	25 A	680	□
FTJ0895030	30 A	1780	■
FTJ0895040	40 A	5470	■
FTJ0895050	50 A	4880	■
FTJ0895060	60 A	9600	■



100/2000 pz
100/2000 pcs
100/2000 pces



30 giorni
30 days
30 jours

AUTOMOTIVE
Automotive | Automobile



SERIE FTZ
FTZ Series | Séries FTZ

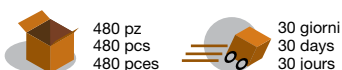
Tensione 32 Vdc	Voltage 32 Vdc	Tension 32 Vdc
Capacità di rottura 2000 A - 32 Vdc	Breaking capacity 2000 A - 32 Vdc	Pouvoir de coupure 2000 A - 32 Vdc
Materiale Ceramica in corpo plastico UL94V0	Material Ceramic, in plastic body UL94V0	Matériau Céramique en corps plastique UL94V0
Terminali Rame stagnato	Terminals Tinned copper	Contacts Cuivre étamé
Temperatura d'utilizzo -40°C +125°C	Temperature range -40°C +125°C	Température d'utilisation -40°C +125°C



TEMPI DI FUSIONE | Time current | Temps de fusion

Corrente nominale In Test current Courant nominal	Corrente di prova Test current Courant d'essai				
	0,5I _n	1I _n	1,35I _n	2I _n	3,5I _n
125A - 250A	-	14,400 s	120 s - 1800 s	1 s - 15 s	0,300 s - 5 s
300A - 600A	14,400 s	-	-	1 s - 40 s	0,300 s - 5 s

Codice Code Code	Corrente nominale Rated current Courant nominal	Dimensioni filo Wire size Taille du fil	Caduta di tensione V Voltage drop V Chute de tension V	I ² t I ² t I ² t
FTZ3298125	125 A	16 mm ²	110 mV	45000
FTZ3298150	150 A	25 mm ²	110 mV	75000
FTZ3298175	175 A	25 mm ²	110 mV	140000
FTZ3298200	200 A	35 mm ²	110 mV	235000
FTZ3298225	225 A	35 mm ²	110 mV	95000
FTZ3298250	250 A	50 mm ²	110 mV	160000
FTZ3298300	300 A	35 mm ²	70 mV	310000
FTZ3298350	350 A	35 mm ²	70 mV	570000
FTZ3298400	400 A	50 mm ²	70 mV	870000
FTZ3298500	500 A	50 mm ²	70 mV	1550000
FTZ3298600	600 A	50 mm ²	70 mV	3000000
FTZ3298900	SHUNT	50 mm ²	/	/



SERIE FT5
FT5 Series | Séries FT5

Tensione 58 Vdc	Voltage 58 Vdc	Tension 58 Vdc
Capacità di rottura 2000 A	Breaking capacity 2000 A	Pouvoir de coupure 2000 A
Materiale Ceramica in corpo plastico UL94V0	Material Ceramic, in plastic body UL94V0	Matériau Céramique en corps plastique UL94V0
Temperatura d'utilizzo -40°C +125°C	Temperature range -40°C +125°C	Température d'utilisation -40°C +125°C



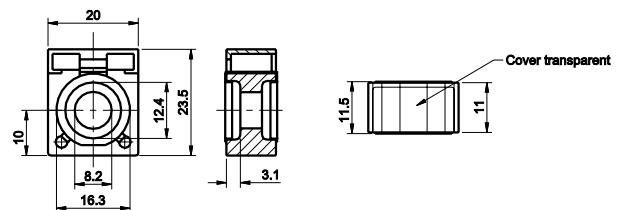
TEMPI DI FUSIONE | Time current | Temps de fusion

Corrente nominale In Test current Courant nominal	Corrente di prova Test current Courant d'essai						
	1I _n	1,35I _n	1,5I _n	2I _n	3I _n	4I _n	6I _n
50A - 300A	360,000 s	3,600 s	1 s - 600 s	0,200 s - 60 s	0,050 s - 1,5 s	0,020 s - 0,50 s	0,20 s

Codice Code Code	Corrente nominale Rated current Courant nominal	Caduta di tensione V Voltage drop V Chute de tension V	I ² t I ² t I ² t	
FT5050	50 A	100 mV	1,900	100
FT5075	75 A	90 mV	12,000	100
FT5100	100 A	80 mV	14,000	100
FT5125	125 A	75 mV	51,000	100
FT5150	150 A	70 mV	63,800	100
FT5175	175 A	70 mV	120,000	100
FT5200	200 A	65 mV	172,800	100
FT5250	250 A	70 mV	330,000	100
FT5300	300 A	70 mV	372,000	100

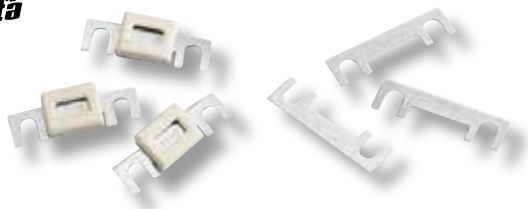
ACCESSORI | Accessories | Accessoires

FP50080	Dado isolante (Duroplastic)/Insulating nut/Ecrou isolant	300 A max	250
FP50994	Dado isolante con uncino di fissaggio 4.9mm (rosso) Insulating nut with 4.9mm fixing hook (red) Ecrou isolant avec crochet de fixation 4,9mm (rouge)	150 A max	100
FP50995	Dado isolante con uncino di fissaggio 5.9mm (nero) Insulating nut with 5.9mm fixing hook (black) Ecrou isolant avec crochet de fixation 5,9mm (noir)	150 A max	100
FP50510	Portafusibile da polo batteria - 1 polo Battery clamp for fuse - 1 pole Porte-fusible du pôle batterie - 1 pôle	250 A max	100
FP50520	Portafusibile da polo batteria - 2 poli Battery clamp for fuse - 2 poles Porte-fusible du pôle batterie - 2 pôles	250 A max	200



AUTOMOTIVE

Automotive | Automobile



FUSIBILI FTM1-FTM2 FTM1-FTM2 fuses | Fusibles FTM1-FTM2

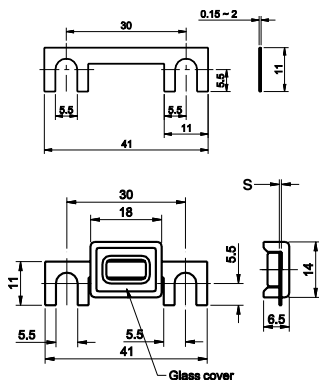
Passo 30 mm	Fixing centres 30 mm	Pas 30 mm
Tensione 36V (FTM1) 80V (FTM2)	Voltage 36V (FTM1) 80V (FTM2)	Tension 36V (FTM1) 80V (FTM2)
Norme riferimento DIN: 72581/2	Standards DIN: 72581/2	Normes DIN: 72581/2



TEMPI DI FUSIONE | Time current | Temps de fusion

Corrente nominale In Test current Courant nominal	Corrente di prova Test current Courant d'essai	
	130%In	250%In
FTM1XXX 25A - 250A FTM2XXX 30A - 150A	3,600 s	60 s

Corrente nominale Rated current Courant nominal	Codice FTM1 FTM1 Code Code FTM1		Codice FTM2 FTM2 Code Code FTM2	
25A	FTM1025	100	-	-
30A	FTM1030	100	FTM2030	50
40A	FTM1040	100	FTM2040	50
50A	FTM1050	100	FTM2050	50
60A	FTM1060	100	FTM2060	50
70A	FTM1070	100	FTM2070	50
80A	FTM1080	100	FTM2080	50
100A	FTM1100	100	FTM2100	50
120A	FTM1120	100	FTM2120	50
125A	FTM1125	100	FTM2125	50
150A	FTM1150	100	FTM2150	50
250A	FTM1250	100	-	-



pronta
in stock
en stock



portafusibile: vedi articolo FP1020 a pag. 93
fuseholder: see P/N FP1020 on page 93
porte-fusible: voir article FP1020 p. 93

FT1XXX



FT2XXX

FUSIBILI FT1-FT2 FT1-FT2 fuses | Fusibles FT1-FT2

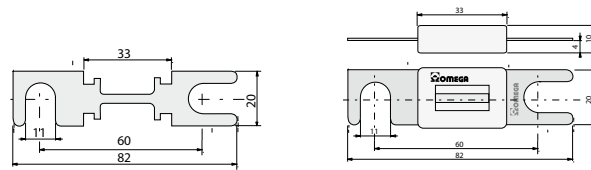
Fusibili per trazione Carrelli industriali ed elevatori	Fuses for battery powered industrial trucks and elevators	Fusibles pour chariots industriels, ascenseurs et monte-charges
Passo 60 mm	Fixing centres 60 mm	Pas 60 mm
Caratteristica F= rapido	Characteristic F= fast	Caractéristique F= rapide
Tensione 48 Vdc	Voltage 48 Vdc	Tension 48 Vdc
Norme riferimento DIN 435600/1	Standards DIN 435600/1	Normes DIN 435600/1



TEMPI DI FUSIONE | Time current | Temps de fusion

Corrente nominale In Test current Courant nominal	Corrente di prova Test current Courant d'essai			
	1,5xIn	1,8xIn	2,5xIn	4xIn
FT1XXX 50 A - 500 A	> 1 h	< 1 h	0,8 - 10 s	0,2 - 2 s
FT2XXX 20 A - 500 A	> 1 h	< 1 h	0,8 - 10 s	0,2 - 2 s

Corrente nominale Rated current Courant nominal	Codice FT1 FTM1 Code Code FTM1		Codice FT2 FTM2 Code Code FTM2	
20 A	-	-	FT 2020	50
25 A	-	-	FT 2025	50
35 A	-	-	FT 2035	50
40 A	-	-	FT 2040	50
50 A	FT 1050	100	FT 2050	50
63 A	FT 1063	100	FT 2063	50
80 A	FT 1080	100	FT 2080	50
100 A	FT 1100	100	FT 2100	50
125 A	FT 1125	100	FT 2125	50
160 A	FT 1160	100	FT 2160	50
175 A	-	-	FT 2175	50
200 A	FT 1200	100	FT 2200	50
225 A	-	-	FT 2225	50
250 A	FT 1250	100	FT 2250	50
275 A	-	-	FT 2275	50
300 A	FT 1300	100	FT 2300	50
325 A	FT 1325	100	FT 2325	50
355 A	FT 1355	100	FT 2355	50
400 A	-	-	FT 2400	50
425 A	FT 1425	100	FT 2425	50
500 A	FT 1500	100	FT 2500	50



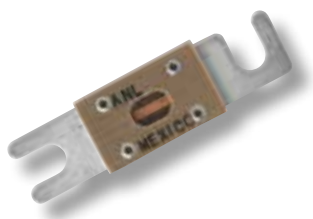
pronta
in stock
en stock



portafusibile: vedi articolo FP1020 a pag. 93
fuseholder: see P/N FP1020 on page 93
porte-fusible: voir article FP1020 p. 93

AUTOMOTIVE

Automotive | Automobile



FUSIBILI FT

FT fuses | Fusibles FT

Fusibili per trazione
Carrelli industriali ed elevatori

Passo
61 mm

Caratteristica
ANN = Extra rapidi
ANL = Semiritardati

Tensione
80 Vdc

Capacità di rottura
2700 A dc

Cod. omologazione
Bussmann = ANN
Bussmann = ANL

Norme riferimento
ANL = SAE J1171

Fuses for battery powered industrial trucks and elevators

Fixing centres
61 mm

Characteristic
ANN = Very fast-acting
ANL = Non time delay

Voltage
80 Vdc

Breaking capacity
2700 A dc

Approval code
Bussmann = ANN
Bussmann = ANL

Standards
ANL = SAE J1171

Fusibles pour chariots industriels, ascenseurs et monte-charge

Pas
61 mm

Caractéristique
ANN = Ultra rapides
ANL = Semi-temporisés

Tension
80 Vdc

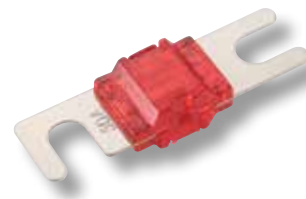
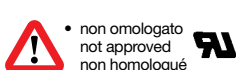
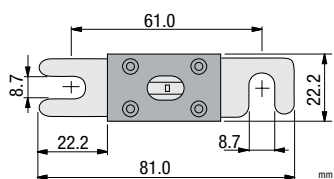
Pouvoir de coupure
2700 A dc

Code d'homologation
Bussmann = ANN
Bussmann = ANL

Normes
ANL = SAE J1171



Corrente nominale Rated current Courant nominal	Codice ANN ANN code Code ANN	Codice ANL ANL code Code ANL
10 A	• ANN-10	-
35 A	ANN-35	ANL-35
40 A	ANN-40	ANL-40
50 A	ANN-50	ANL-50
60 A	ANN-60	ANL-60
80 A	ANN-80	ANL-80
90 A	ANN-90	-
100 A	ANN-100	ANL-100
125 A	ANN-125	ANL-125
130 A	-	ANL-130
150 A	ANN-150	ANL-150
175 A	ANN-175	ANL-175
200 A	ANN-200	ANL-200
225 A	ANN-225	ANL-225
250 A	ANN-250	ANL-250
275 A	ANN-275	ANL-275
300 A	ANN-300	ANL-300
325 A	ANN-325	ANL-325
350 A	ANN-350	ANL-350
400 A	ANN-400	ANL-400
500 A	ANN-500	ANL-500
600 A	• ANN-600	ANL-600
675 A	-	ANL-675
700 A	• ANN-700	-
750 A	-	ANL-750
800 A	• ANN-800	-



FUSIBILI FT

FT fuses | Fusibles FT

Fusibili isolati per trazione
carrelli industriali, elevatori ed altre applicazioni automotive

Passo
30 mm

Tensione
32 V

Capacità di rottura
5000 A dc

Cod. omologazione
Littelfuse MIDI

Insulated fuses for battery powered industrial trucks, elevators and other automotive appliances

Fixing centres
30 mm

Voltage
32 V

Breaking capacity
5000 A dc

Approval code
Littelfuse MIDI

Fusibles isolés pour chariots industriels, monte-charge et autres applications automobiles

Pas
30 mm

Tension
32 V

Pouvoir de coupure
5000 A dc

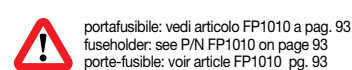
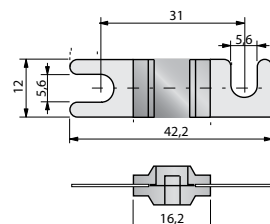
Code d'homologation
Littelfuse MIDI



TEMPI DI FUSIONE | Time current | Temps de fusion

Corrente nominale In Rated current Courant nominal	Corrente di prova Test current Courant d'essai			
	1,1xIn	1,5xIn	2,0xIn	3,0xIn
30 A - 200 A	> 4 h	min max 90 s - 3600 s	min max 55 s - 100 s	min max 0,55 s - 15 s

Corrente nominale Rated current Courant nominal	Codice Code Code	Colore Colour Couleur
30 A	FT 3030	Orange
40 A	FT 3040	Green
50 A	FT 3050	Red
60 A	FT 3060	Yellow
70 A	FT 3070	Brown
80 A	FT 3080	White
100 A	FT 3100	Blue
125 A	FT 3125	Pink
150 A	FT 3150	Grey
200 A	FT 3200	Purple



AUTOMOTIVE
Automotive | Automobile



SERIE FT3
FT3 Series | Séries FT3

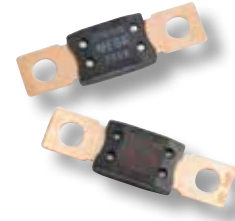
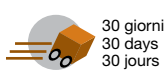
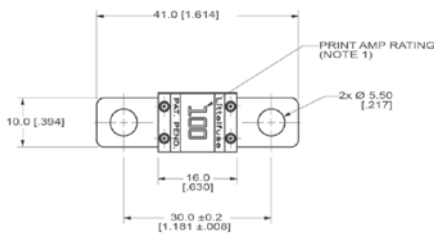
Tensione 32 Vdc	Voltage 32 Vdc	Tension 32Vdc
Passo 30 mm	Fixing centres 30 mm	Pas 30 mm
Caratteristica T=Ritardato	Characteristic T=Time delay	Caractéristique T=Temporisé
Capacità di rottura 1000 A	Breaking capacity 1000 A	Pouvoir de coupure 1000 A
Norme riferimento ISO 8820-5	Standards ISO 8820-5	Normes ISO 8820-5
Cod. omologazione Littelfuse MIDI	Approval code Littelfuse MIDI	Code d'homologation Littelfuse MIDI



TEMPI DI FUSIONE | Time current | Temps de fusion

% of Rating	Opening Time Min/Max (s)							
	0,75xIn	1xIn	1,1xIn	1,5xIn	2xIn	3xIn	3,5xIn	5xIn
125A - 250A	-	360,000 s	14,400 s	90 s - 3,600 s	3 s - 100 s	0,3 s - 3 s	-	0,1 s - 1 s
300A - 600A	360,000 s	-	-	-	1 s - 15 s	-	0,3 s - 5 s	0,1 s - 1 s

Code	Rated current	Voltage drop	Colour	I ² t
Code	Courant nominal	Chute de tension	Couleur	Pt
FT3023/UR	23 A	90 mV	□	1,800
FT3030/UR	30 A	65 mV	□	4,200
FT3040/UR	40 A	65 mV	□	10,000
FT3050/UR	50 A	65 mV	□	13,000
FT3060/UR	60 A	68 mV	□	21,700
FT3070/UR	70 A	70 mV	□	24,000
FT3080/UR	80 A	58 mV	□	24,600
FT3100/UR	100 A	60 mV	□	51,300
FT3125/UR	125 A	71 mV	□	73,200
FT3150/UR	150 A	77 mV	□	81,900
FT3175/UR	175 A	77 mV	□	100,000
FT3200/UR	200 A	77 mV	□	125,000



SERIE FT4
FT4 Series | Séries FT4

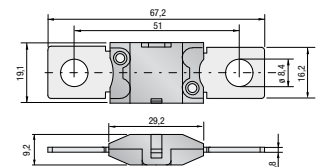
Tensione 32 Vdc	Voltage 32 Vdc	Tension 32Vdc
Passo 50,8 mm	Fixing centres 50,8 mm	Pas 50,8 mm
Caratteristica T=Ritardato	Characteristic T=Time delay	Caractéristique T=Temporisé
Capacità di rottura 2000 A	Breaking capacity 2000 A	Pouvoir de coupure 2000 A
Norme riferimento ISO 8820-5	Standards ISO 8820-5	Normes ISO 8820-5
Cod. omologazione Littelfuse MEGA	Approval code Littelfuse MEGA	Code d'homologation Littelfuse MEGA



TEMPI DI FUSIONE | Time current | Temps de fusion

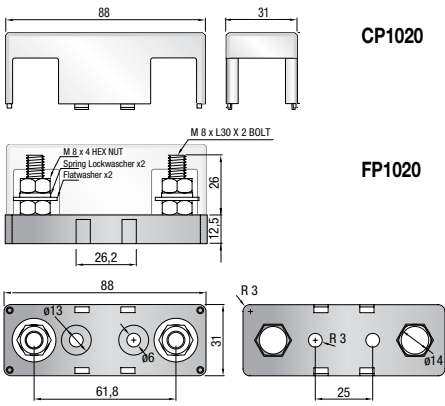




Corrente nominale In Rated current Courant nominal	Corrente di prova Test current Courant d'essai					
	0,75xIn	1xIn	1,35xIn	2xIn	3,5xIn	6xIn
FT4XXX/LF 30A - 125A	-	14,400 s	120 s - 1800 s	1 s - 15 s	0,300 s - 5 s	0,1 s - 1 s
FT4XXX/LF 150A - 200A	14,400 s	-	-	1 s - 15 s	0,500 s - 5 s	0,1 s - 1 s
FT4XXX/UR 80A - 175A	-	14,400 s	120 s - 1800 s	1 s - 15 s	0,300 s - 5 s	0,1 s - 1 s


Code	Rated current	Colour	Voltage drop	I ² t
Code	Courant nominal	Couleur	Chute de tension	Pt
FT4080/UR	80 A	□	87 mV	21500
FT4100/UR	100 A	□	87 mV	31100
FT4125/UR	125 A	□	80 mV	57800
FT4150/UR	150 A	□	92 mV	100000
FT4175/UR	175 A	□	62 mV	168000
FT4040/LF	40 A	-	132 mV	8700
FT4060/LF	60 A	-	119 mV	21000
FT4080/LF	80 A	-	87 mV	21500
FT4100/LF	100 A	-	87 mV	31100
FT4125/LF	125 A	-	80 mV	57800
FT4150/LF	150 A	-	92 mV	100000
FT4175/LF	175 A	-	86 mV	168000
FT4200/LF	200 A	-	83 mV	204000
FT4225/LF	225 A	-	82 mV	257000
FT4250/LF	250 A	-	82 mV	389000
FT4300/LF	300 A	-	74 mV	315000
FT4350/LF	350 A	-	68 mV	500000
FT4400/LF	400 A	-	64 mV	610000
FT4450/LF	450 A	-	60 mV	1050000
FT4500/LF	500 A	-	58 mV	2050000

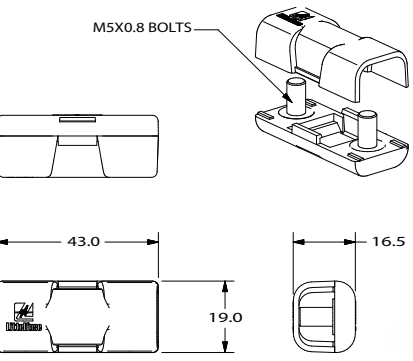






PORTAFUSIBILI

Fuseholders | *Porte-fusibles*

FP1020 - CP1020	Per fusibili FT1xxx - FT2xxx FP1020 portafusibile Corrente 500 A Corpo Resina fenolica anti-fiamma Contatti Acciaio CP1020 Coperchio Materiale Policarbonato UL94-V0	For FT1xxx - FT2xxx Fuses FP1020 fuseholder Current 500 A Body Flame retardant phenolic resin Contacts Steel CP1020 Cover Material Polycarbonate UL94-V0	Pour fusibles FT1xxx - FT2xxx FP1020 porte-fusible Courant 500 A Corps Résine phénolique anti-flamme Contacts Acier CP1020 Capot Matériau Polycarbonate UL94-V0	 <p>CP1020 FP1020</p>	
	 50 pz 50 pcs 50 pces			 pronta in stock en stock	
					

FP1010 - CP1010	Per fusibili FT3xxx FP1010 portafusibile Corrente 300 A Corpo Resina fenolica anti-fiamma Contatti Acciaio CP1010 Coperchio Materiale Policarbonato UL94-V0	For FT3xxx Fuses FP1010 fuseholder Current 300 A Body Flame retardant phenolic resin Contacts Steel CP1010 Cover Material Polycarbonate UL94-V0	Pour fusibles FT3xxx FP1010 porte-fusible Courant 300 A Corps Résine phénolique anti-flamme Contacts Acier CP1010 Capot Matériau Polycarbonate UL94-V0	 <p>CP1010 FP1010</p>	
	 50 pz 50 pcs 50 pces			 pronta in stock en stock	
					

FP1011	Per fusibili FT3xxx FP1011 portafusibile Corrente 200A Corpo Nylon con fibra di vetro UL94V-0 Contatti Acciaio zincato	For FT3xxx Fuses FP1011 fuseholder Current 200A Body Nylon glass filled UL94V-0 Contacts Zinc plated steel	Pour fusibles FT3xxx FP1011 porte-fusible Courant 200A Corps Nylon avec fibre de verre UL94V-0 Contacts Acier zingué	 <p>M5X0.8 BOLTS</p>	
	 100 pz 100 pcs 100 pces			 pronta in stock en stock	
					

FP1012	Per fusibili FT3xxx FP1012 portafusibile Corrente 200 A Protezione Contro gli spruzzi Contatti Acciaio zincato	For FT3xxx Fuses FP1012 fuseholder Current 200 A Protection Sprinkles proof Contacts Zinc plated steel	Pour fusibles FT3xxx FP1012 porte-fusible Courant 200 A Protection Contre les éclaboussures Contacts Acier zingué	 <p>○ = pos. mounting holes</p>	
	 330 pz 330 pcs 330 pces			 pronta in stock en stock	
					

PORTAFUSIBILI

Fuseholders | *Porte-fusibles*

FP1040	Per fusibili FT4xxx FP1040 portafusibile Corrente 300 A Corpo Nylon con fibra di vetro Contatti Ottone	For FT4xxx Fuses FP1040 fuseholder Current 300 A Body Nylon with glass fiber Contacts Brass	Pour fusibles FT4xxx FP1040 porte-fusible Courant 300 A Corps Nylon avec fibre de verre Contacts Laiton	
	50 pz 50 pcs 50 pces	pronta in stock en stock		

FP1041	Per fusibili FT4xxx FP1041 portafusibile Corrente 500 A Protezione Contro gli spruzzi Contatti Zinco placcato	For FT4xxx Fuses FP1041 fuseholder Current 500 A Protection Sprinkles proof Contacts Zinc plated	Pour fusibles FT4xxx FP1041 porte-fusible Courant 500 A Protection Contre les éclaboussures Contacts Zinc plaqué	
	160 pz 160 pcs 160 pces	pronta in stock en stock		

PORTAFUSIBILI

Fuseholders | *Porte-fusibles*

C1042 - PZ1013	Portafusibile RL	RL fuseholder	Porte-fusibile RL	
	Per fusibili a mini lama Corrente 15A Tensione 125V Base Termoplastico UL94V-0 Contatti Bronzo stagnato	Fuse holder for mini blade fuses Current 15A Voltage 125V Base Thermoplastic UL94V-0 Contacts Tinned bronze	Pour mini fusibles à lames Courant 15A Tension 125V Base Thermoplastique UL94V-0 Contacts Bronze étamé	
		1000 pz 1000 pcs 1000 pces	pronta in stock en stock	a richiesta sono fornibili in Rame Berillio stagnato - 30A they are available in Beryllium Copper tinned - 30A upon request sur demande on peut les fournir en Cuivre beryllium étamé - 30A


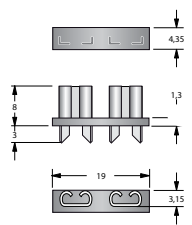
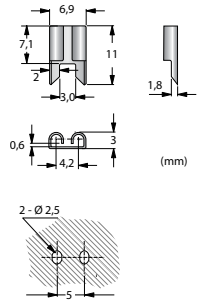



C1046	Portafusibile PCB	PCB fuseholder	Porte-fusibile PCB	
	Per fusibili a mini lama Corrente 15A Tensione 32V Corpo Termoplastico UL94V-0 Contatti Bronzo stagnato	Fuse holder for mini blade fuses Current 15A Voltage 32V Body Thermoplastic UL94V-0 Contacts Tinned bronze	Pour mini fusibles à lames Courant 15A Tension 32V Corps Thermoplastique UL94V-0 Contacts Bronze étamé	
		1000 pz 1000 pcs 1000 pces	pronta in stock en stock	


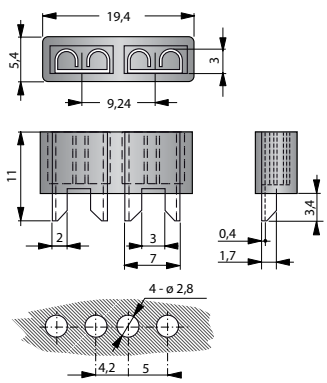



C1047	Portafusibile PCB	PCB fuseholder	Porte-fusibile PCB	
	Per fusibili a mini lama Corrente 30A Tensione 125V Corpo Termoplastico UL94V-0 Contatti Bronzo stagnato	Fuse holder for mini blade fuses Current 30A Voltage 125V Body Thermoplastic UL94V-0 Contacts Tinned bronze	Pour mini fusibles à lames Courant 30A Tension 125V Corps Thermoplastique UL94V-0 Contacts Bronze étamé	
		100 pz 100 pcs 100 pces	pronta in stock en stock	


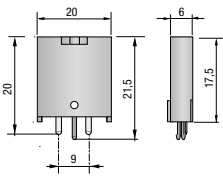
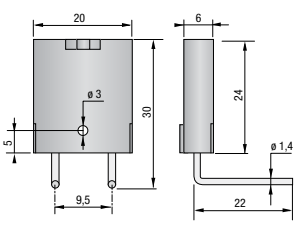



V1162	Portafusibile IP64	IP64 fuseholder	Porte-fusibile IP64	
	Per fusibili a mini lama Corrente 30A Tensione 32V Corpo PVC Contatti Bronzo stagnato Resistenza isolamento 100 mΩ Resistenza di contatto 5 mΩ a 1A DC Forza dielettrica per 60 sec AC 1000V min Cavo UL-12AWG	Fuse holder for mini blade fuses Current 30A Voltage 32V Body PVC Contacts Tinned bronze Insulation resistance 100 mΩ Contact resistance 5 mΩ a 1A DC Dielectric strength for 60 sec AC 1000V min Cable UL-12AWG	Pour mini fusibles à lames Courant 30A Tension 32V Corps PVC Contacts Bronze étamé Résistance d'isolation 100 mΩ Résistance de contact 5 mΩ a 1A DC Force diélectrique pour 60 sec AC 1000V min Cordon UL-12AWG	
		50 pz 50 pcs 50 pces	60 giorni 60 days 60 jours	

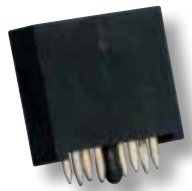
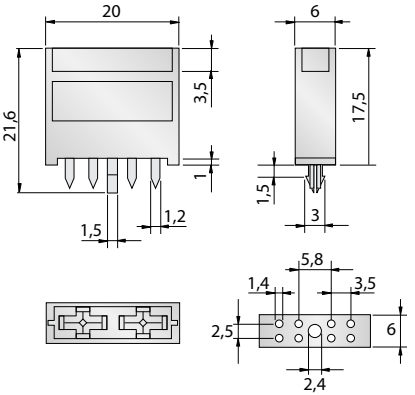



PORTAFUSIBILI

Fuseholders | *Porte-fusibles*

C1043 - PZ1011	Portafusibile AL	AL fuseholder	Porte-fusibile AL	C1043	PZ 1011
 <p>PZ 1011</p>	<p>Per fusibili a lama</p> <p>Corrente 20A (C1043) 15A (PZ1011)</p> <p>Tensione 80 V</p> <p>Base Termoplastico UL94-V0</p> <p>Contatti Bronzo stagnato</p>	<p>Fuse holder for blade fuses</p> <p>Current 20A (C1043) 15A (PZ1011)</p> <p>Voltage 80 V</p> <p>Base Thermoplastic UL94-V0</p> <p>Contacts Tinned bronze</p>	<p>Pour fusibles à lames</p> <p>Courant 20A (C1043) 15A (PZ1011)</p> <p>Tension 80 V</p> <p>Base Thermoplastique UL94-V0</p> <p>Contacts Bronze étamé</p>	 	<p>a richiesta sono fornibili in Rame Berillio stagnato - 30A they are available in Beryllium Copper tinned - 30A upon request sur demande on peut les fournir en Cuivre beryllium étamé - 30A</p>
	 1000 pz 1000 pcs 1000 pces	 pronta in stock en stock			

C1045	Portafusibile AL	AL fuseholder	Porte-fusibile AL	C1045	
	<p>Per fusibili a lama</p> <p>Corrente 30 A</p> <p>Tensione 80 V</p> <p>Corpo Nylon con fibra di vetro</p> <p>Contatti Bronzo fosforoso stagnato</p>	<p>Fuse holder for blade fuses</p> <p>Current 30 A</p> <p>Voltage 80 V</p> <p>Body Nylon with glass fiber</p> <p>Contacts Tinned phosphorous bronze</p>	<p>Pour fusibles à lames</p> <p>Courant 30 A</p> <p>Tension 80 V</p> <p>Corps Nylon avec fibre de verre</p> <p>Contacts Bronze phosphoreux étamé</p>		
	 1000 pz 1000 pcs 1000 pces	 pronta in stock en stock			

C1040 - C1041	Portafusibile	Fuseholder	Porte-fusibile	C1040	C1041
	<p>Per fusibili a lama</p> <p>C1040 40 A 80 V Portafusibili da circuiti stampati verticale</p> <p>C1041 40 A 80 V Contatti a 90° - orizzontale</p> <p>Contatti Ottone stagnato</p> <p>Base Termoplastico autoestinguente</p>	<p>Fuse holder for blade fuses</p> <p>C1040 40 A 80 V Vertical printed circuit fuseholder</p> <p>C1041 40 A 80 V 90° Contacts horizontal</p> <p>Contacts Tinned brass</p> <p>Base Self-extinguishing thermoplastic</p>	<p>Pour fusibles à lames</p> <p>C1040 40 A 80 V Porte-fusibile vertical pour circuit imprimé</p> <p>C1041 40 A 80 V Contacts horizontaux à 90°</p> <p>Contacts Laiton étamé</p> <p>Base Thermoplastique auto-extinguible</p>		
	 50 pz 50 pcs 50 pces	 60 giorni 60 days 60 jours			

C1044	Portafusibile	Fuseholder	Porte-fusibile	C1044	
	<p>Per fusibili a lama</p> <p>30 A 80 V Portafusibili da circuiti stampati verticali 8 pins</p> <p>Contatti Rame argentato</p>	<p>Fuse holder for blade fuses</p> <p>30 A 80 V Vertical printed circuit fuseholders 8 pins</p> <p>Contacts Silver plated copper</p>	<p>Pour fusibles à lames</p> <p>30 A 80 V Porte-fusibles vertical pour circuit imprimé 8 pins</p> <p>Contacts cuivre argenté</p>		
	 50 pz 50 pcs 50 pces	 pronta in stock en stock			

PORTAFUSIBILI

Fuseholders | *Porte-fusibles*

V1180	Portafusibile 40 A 32 V Con cappuccio di protezione trasparente per fusibile a lama Corpo Nylon PA 6.6 Cappuccio di protezione Policarbonato Contatti Ottone stagnato Faston 6,3 mm	Fuseholder 40 A 32 V With transparent protection cover for blade fuses Body Nylon PA 6.6 Protection cover Polycarbonate Contacts Tinned brass Faston 6,3 mm	Porte-fusible 40 A 32 V Avec capot de protection transparent pour fusibles à lame Corps Nylon PA 6.6 Capot de protection Polycarbonate Contacts Laiton étamé Faston 6,3 mm	
	50 pz 50 pcs 50 pces	60 giorni 60 days 60 jours		

V1130 - V1150 - V1131	Portafusibile V1130 - 40 A 50 V Componibile per fusibili a lama V1150 - 40 A 32 V Componibile con cappuccio di protezione trasparente Corpo Nylon Termoplastico Contatti Ottone stagnato Faston 6,3 mm V1131 Basetta supporto da fissare al pannello	Fuseholder V1130 - 40 A 50 V Modular fuseholders for blade fuses V1150 - 40 A 32 V Modular fuseholder with transparent protection cover Body Nylon Thermoplastic Contacts Tinned brass Faston 6,3 mm V1131 Fixing plates	Porte-fusible V1130 - 40 A 50 V Porte-fusibles pour fusibles à lame V1150 - 40 A 32 V Porte-fusible avec capot de protection transparent Corps Nylon Thermoplastique Contacts Laiton étamé Faston 6,3 mm V1131 Support à fixer au panneau	
	100 pz 100 pcs 100 pces	60 giorni 60 days 60 jours		

V1140	Portafusibile 20 A 32 V Da incasso snap-in per fusibili a lama Corpo Termoplastico Contatti Ottone stagnato Faston 6,3 mm	Fuseholder 20 A 32 V Insertable snap-in fuseholder for blade fuses Body Thermoplastic Contacts Tinned brass Faston 6,3 mm	Porte-fusible 20 A 32 V Fixation à enclenchement pour fusibles à lame Corps Thermoplastique Contacts Laiton étamé Faston 6,3 mm	
	100 pz 100 pcs 100 pces	60 giorni 60 days 60 jours		

V1161	Portafusibile IP64 V1161 30 A 32 V Per fusibili a lama Corpo Pvc Contatti Ottone stagnato Resistenza di isolamento 100 mΩ min. Resistenza di contatto 5 mΩ a 1A DC Forza dielettrica per 60 sec V1161 AC 1500V min Cavo UL-12AWG	Fuseholder IP64 V1161 30 A 32 V Fuseholder for blade fuses Body Pvc Contacts Tinned brass Insulation resistance 100 mΩ min. Contact resistance 5 mΩ a 1A DC Dielectric strenght for 60 sec V1161 AC 1500V min Wire UL-12AWG	Porte-fusible IP64 V1161 30 A 32 V Pour fusibles à lames Corps Pvc Contacts Laiton étamé Résistance d'isolation 100 mΩ min. Résistance de contact 5 mΩ a 1A DC Force diélectrique pour 60 sec V1161 AC 1500V min Cordon UL-12AWG	
	50 pz 50 pcs 50 pces	60 giorni 60 days 60 jours		

PORTAFUSIBILI

Fuseholders | *Porte-fusibles*

V1191	Portafusibile	Fuseholder	Porte-fusible	
	Per fusibili maxi a lama	For maxi fuse blade	Pour maxi fusibles à lames	
	Corrente 60A Corpo Termoplastico UL94V-0 Contatti A vite	Current 60A Body Thermoplastic UL94V-0 Contacts Screws	Courant 60A Corps Thermoplastique UL94V-0 Contacts A vis	
		50 pz 50 pcs 50 pces	60 giorni 60 days 60 jours	

V1160	Portafusibile	Fuseholder	Porte-fusible	
	80 A 32 V Per maxi fusibili Corpo Pvc Contatti Ottone stagnato Resistenza di isolamento 100 mΩ min Resistenza di contatto 5 mΩ a 1A DC Forza dielettrica per 60 s AC 3000V min Cavo UL-8AWG	80 A 32 V Fuseholder for maxi fuses Body Pvc Contacts Tinned brass Insulation resistance 100 mΩ min Contact resistance 5 mΩ a 1A DC Dielectric strength for 60 s AC 3000V min Wire UL-8AWG	80 A 32 V Pour maxi fusibles Corps Pvc Contacts Laiton étamé Résistance d'isolation 100 mΩ min. Résistance de contact 5 mΩ a 1A DC Force diélectrique pour 60 s AC 3000V min Cordon UL-8AWG	
		50 pz 50 pcs 50 pces	60 giorni 60 days 60 jours	

C1048 - PZ1015	Portafusibile	Fuseholder	Porte-fusible	
	Per maxi fusibili Corrente 80A Tensione 80V Base Nylon con fibra di vetro UL94V-0 Contatti Bronzo fosforoso stagnato	Fuseholder for maxi fuses Current 80A Voltage 80V Base Glass filled Nylon UL94V-0 Contacts Tinned phosphorous bronze	Pour maxi fusibles Courant 80A Tension 80V Base Nylon avec fibre de verre UL94V-0 Contacts Bronze phosphoreux étamé	
		1000 pz 1000 pcs 1000 pces	pronta in stock en stock	

V1072	Portafusibile	Fuseholder	Porte-fusible	
	8 A 32 V Per fusibili auto conici Contatti Ottone stagnato Corpo Bachelite Unione a baionetta	8 A 32 V Fuseholder for tapered fuses Contacts Tinned brass Body Bakelite Bayonet fixing	8 A 32 V Pour fusibles auto coniques Contacts Laiton étamé Corps Bakélite Fixation à baionnette	
		100 pz 100 pcs 100 pces	60 giorni 60 days 60 jours	

incluso di fusibile 8A
8A fuses included
fusibile 8A inclus

